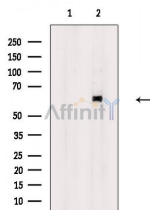


Phospho-Occludin (Tyr287) Ab

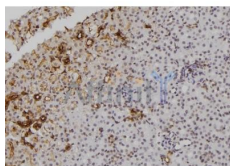
[References\(1\)](#) [Images\(6\)](#)

Cat.#: AF7069	Concn.: ~1mg/ml	Mol.Wt.: 23~30kD, 52~65kD
Size:	Source: Rabbit	Clonality: Polyclonal

Application:	WB 1:500-1:2000, IHC 1:50-1:200 *The optimal dilutions should be determined by the end user.
Reactivity:	Human, Mouse, Rat
Storage:	Rabbit IgG in phosphate buffered saline, pH 7.4, 150mM NaCl, 0.02% sodium azide and 50% glycerol. Store at -20 °C. Stable for 12 months from date of receipt.
Purification:	The Ab is from purified rabbit serum by affinity purification via sequential chromatography on phospho-peptide and non-phospho-peptide affinity columns.
Immunogen:	A synthesized peptide derived from human Occludin around the phosphorylation site of Tyr287.
Uniprot:	Q16625



Western blot analysis of extracts from PC12 (1ps4h treatment), using Phospho-Occludin (Tyr287) Ab. The lane on the left was treated with blocking peptide.



AF7069 at 1/100 staining mouse kidney tissue sections by IHC-P. The tissue was formaldehyde fixed and a heat mediated antigen retrieval step in citrate buffer was performed. The tissue was then blocked and incubated with the Ab for 1.5 hours at 22°C. An HRP conjugated goat anti-rabbit Ab was used as the secondary Ab.

IMPORTANT: For western blot, incubate membrane with diluted primary Ab in 5% w/v milk, 1X TBS, 0.1% Tween@20 at 4°C with gentle shaking, overnight.

For Research Use Only. Not for use in diagnostic and therapeutic procedures. Not for resale without express authorization.