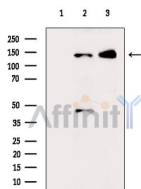


## Phospho-Gli1 (Thr1074) Ab

[References\(1\)](#) [Images\(3\)](#)

Cat.#: AF7070	Concn.: ~1mg/ml	Mol.Wt.: 119kDa
Size:	Source: Rabbit	Clonality: Polyclonal
Application:	WB 1:500-1:2000 *The optimal dilutions should be determined by the end user.	
Reactivity:	Human,Mouse	
Storage:	Rabbit IgG in phosphate buffered saline , pH 7.4, 150mM NaCl, 0.02% sodium azide and 50% glycerol. Store at -20 °C. Stable for 12 months from date of receipt.	
Purification:	The Ab is from purified rabbit serum by affinity purification via sequential chromatography on phospho-peptide and non-phospho-peptide affinity columns.	
Immunogen:	A synthesized peptide derived from human Gli1 around the phosphorylation site of Thr1074.	
Uniprot:	P08151	



Western blot analysis of extracts from various samples, using Phospho-Gli1 (Thr1074) Ab.

Lane 1: Mc-3t3-e1 cells(h2o2 treatment), blocked with antigen-specific peptides.

Lane 2: Mc-3t3-e1 cells(h2o2 treatment).

Lane 3: Raw264.7 cells.

**IMPORTANT:** For western blot, incubate membrane with diluted primary Ab in 5% w/v milk , 1X TBS, 0.1% Tween@20 at 4°C with gentle shaking, overnight.

For Research Use Only. Not for use in diagnostic and therapeutic procedures. Not for resale without express authorization.