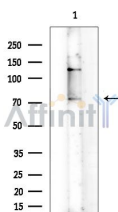


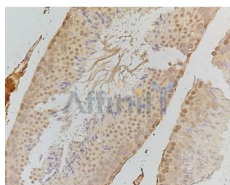
Phospho-PKR (Thr446) Ab

[References\(2\)](#) [Images\(9\)](#)

Cat.#: AF3216	Concn.: ~1mg/ml	Mol.Wt.: 74kDa
Size:	Source: Rabbit	Clonality: Polyclonal
Application:	WB 1:500-1:2000, IF/ICC 1:100-1:500, IHC 1:50-1:200 *The optimal dilutions should be determined by the end user.	
Reactivity:	Human	
Storage:	Rabbit IgG in phosphate buffered saline , pH 7.4, 150mM NaCl, 0.02% sodium azide and 50% glycerol. Store at -20 °C. Stable for 12 months from date of receipt.	
Purification:	The Ab is from purified rabbit serum by affinity purification via sequential chromatography on phospho-peptide and non-phospho-peptide affinity columns.	
Immunogen:	A synthesized peptide derived from human PKR around the phosphorylation site of Thr446.	
Uniprot:	P19525	
Description:	PKR a protein kinase of the PEK family. Upon binding double-stranded RNA, it becomes autophosphorylated and activated. Phosphorylates and inhibits the alpha subunit of eIF2 alpha, which leads to an inhibition of the initiation of protein synthesis.	



Western blot analysis of extracts from COLO205 cells(heat-shock treatment), using Phospho-PKR (Thr446) Ab at 1/1000 dilution.
Observed bands:75kD.



AF3216 at 1/100 staining human testis tissue by IHC-P. The sample was formaldehyde fixed and a heat mediated antigen retrieval step in citrate buffer was performed. The sample was then blocked and incubated with the Ab for 1.5 hours at 22°C. An HRP conjugated goat anti-rabbit Ab was used as the secondary Ab.

IMPORTANT: For western blot, incubate membrane with diluted primary Ab in 5% w/v milk , 1X TBS, 0.1% Tween@20 at 4°C with gentle shaking,



Affinity Biosciences
website: www.affbiotech.com
order: order@affbiotech.com

overnight.

For Research Use Only. Not for use in diagnostic and therapeutic procedures. Not for resale without express authorization.