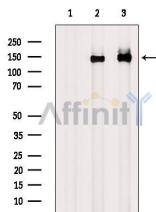


## Phospho-APP (Tyr757) Ab

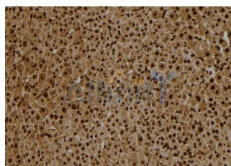
[Images\(5\)](#)

|               |   |                       |
|---------------|---|-----------------------|
| Cat.#: AF7187 | Concn.: ~1mg/ml   | Mol.Wt.: 140kDa       |
| Size:         | Source: Rabbit  | Clonality: Polyclonal |
| Application:  | WB 1:500-1:2000, IHC 1:50-1:200<br>*The optimal dilutions should be determined by the end user.   |                       |
| Reactivity:   | Human, Mouse, Rat   |                       |
| Storage:      | Rabbit IgG in phosphate buffered saline, pH 7.4, 150mM NaCl, 0.02% sodium azide and 50% glycerol. Store at -20 °C. Stable for 12 months from date of receipt. |                       |
| Purification: | The Ab is from purified rabbit serum by affinity purification via sequential chromatography on phospho-peptide and non-phospho-peptide affinity columns.      |                       |
| Immunogen:    | A synthesized peptide derived from human APP around the phosphorylation site of Tyr757.   |                       |
| Uniprot:      | P05067  |                       |



Western blot analysis of extracts from various samples, using Phospho-APP (Tyr757) Ab.

Lane 1: Heat-shock treated Hela cells, blocked with antigen-specific peptides,  
Lane 2: Heat-shock treated Hela cells,  
Lane 3: H<sub>2</sub>O<sub>2</sub> treated HepG2 cells.



AF7187 at 1/100 staining mouse liver tissue sections by IHC-P. The tissue was formaldehyde fixed and a heat mediated antigen retrieval step in citrate buffer was performed. The tissue was then blocked and incubated with the Ab for 1.5 hours at 22°C. An HRP conjugated goat anti-rabbit Ab was used as the secondary Ab.

**IMPORTANT:** For western blot, incubate membrane with diluted primary Ab in 5% w/v milk, 1X TBS, 0.1% Tween@20 at 4°C with gentle shaking, overnight.

For Research Use Only. Not for use in diagnostic and therapeutic procedures. Not for resale without express authorization.