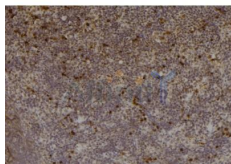


## Phospho-PKC beta 1 (Thr642+Thr644) Ab

[Images\(4\)](#)

|               |                 |                       |
|---------------|-----------------|-----------------------|
| Cat.#: AF7191 | Concn.: ~1mg/ml | Mol.Wt.: 77kDa        |
| Size:         | Source: Rabbit  | Clonality: Polyclonal |

|               |   |
|---------------|---|
| Application:  | WB 1:500-1:2000, IHC 1:50-1:200<br>*The optimal dilutions should be determined by the end user.   |
| Reactivity:   | Human, Mouse, Rat   |
| Storage:      | Rabbit IgG in phosphate buffered saline, pH 7.4, 150mM NaCl, 0.02% sodium azide and 50% glycerol. Store at -20 °C. Stable for 12 months from date of receipt. |
| Purification: | The Ab is from purified rabbit serum by affinity purification via sequential chromatography on phospho-peptide and non-phospho-peptide affinity columns.      |
| Immunogen:    | A synthesized peptide derived from human PKC beta 1 around the phosphorylation site of Thr642+Thr644.   |
| Uniprot:      | P05771  |



AF7191 at 1/100 staining mouse spleen tissue sections by IHC-P. The tissue was formaldehyde fixed and a heat mediated antigen retrieval step in citrate buffer was performed. The tissue was then blocked and incubated with the Ab for 1.5 hours at 22°C. An HRP conjugated goat anti-rabbit Ab was used as the secondary Ab.

**IMPORTANT:** For western blot, incubate membrane with diluted primary Ab in 5% w/v milk, 1X TBS, 0.1% Tween@20 at 4°C with gentle shaking, overnight.

For Research Use Only. Not for use in diagnostic and therapeutic procedures. Not for resale without express authorization.