

Phospho-CBL (Tyr674) Ab

[Images\(5\)](#)

Cat.#: AF3225
Size:

Concn.: ~1mg/ml
Source: Rabbit

Mol.Wt.: 120kDa
Clonality: Polyclonal

Application:

WB 1:500-1:2000, IHC 1:50-1:200, IF/ICC 1:100-1:500

*The optimal dilutions should be determined by the end user.

Reactivity:

Human, Mouse, Rat

Storage:

Rabbit IgG in phosphate buffered saline, pH 7.4, 150mM NaCl, 0.02% sodium azide and 50% glycerol. Store at -20 °C. Stable for 12 months from date of receipt.

Purification:

The Ab is from purified rabbit serum by affinity purification via sequential chromatography on phospho-peptide and non-phospho-peptide affinity columns.

Immunogen:

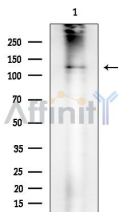
A synthesized peptide derived from human CBL around the phosphorylation site of Tyr674.

Uniprot:

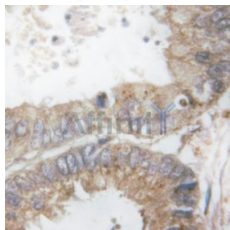
P22681

Description:

Cbl an adapter protein that functions as a negative regulator of many signaling pathways that start from receptors at the cell surface.



Western blot analysis of extracts from Rat brain, using Phospho-CBL (Tyr674) Ab at 1/1000 dilution.
Observed bands: 125kD.



AF3225 at 1/200 staining Human breast cancer tissue sections by IHC-P. The tissue was formaldehyde fixed and a heat mediated antigen retrieval step in citrate buffer was performed. The tissue was then blocked and incubated with the Ab for 1.5 hours at 22°C. An HRP conjugated goat anti-rabbit Ab was used as the secondary Ab.

IMPORTANT: For western blot, incubate membrane with diluted primary Ab in 5% w/v milk, 1X TBS, 0.1% Tween@20 at 4°C with gentle shaking, overnight.



Affinity Biosciences

website: www.affbiotech.com

order: order@affbiotech.com

For Research Use Only. Not for use in diagnostic and therapeutic procedures. Not for resale without express authorization.