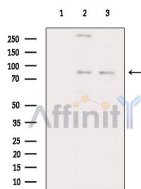


Phospho-GIT2 (Tyr392) Ab

[Images\(3\)](#)

Cat.#: AF7382	Concn.: ~1mg/ml	Mol.Wt.: 84KD
Size:	Source: Rabbit	Clonality: Polyclonal

Application:	WB 1:500-1:2000, IF/ICC 1:100-1:500 *The optimal dilutions should be determined by the end user.
Reactivity:	Human,Mouse,Rat
Storage:	Rabbit IgG in phosphate buffered saline , pH 7.4, 150mM NaCl, 0.02% sodium azide and 50% glycerol. Store at -20 °C. Stable for 12 months from date of receipt.
Purification:	The Ab is from purified rabbit serum by affinity purification via sequential chromatography on phospho-peptide and non-phospho-peptide affinity columns.
Immunogen:	A synthesized peptide derived from human GIT2 around the phosphorylation site of Tyr392.
Uniprot:	Q14161

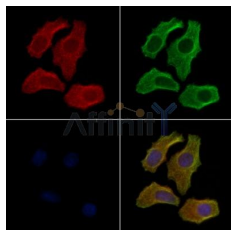


Western blot analysis of extracts from various samples, using Phospho-GIT2 (Tyr392) Ab.

Lane 1: Pc12 cells(heat-shock treatment), blocked with antigen-specific peptides.

Lane 2: Pc12 cells(heat-shock treatment).

Lane 3: 3t3-l1 cells(heat-shock treatment).



AF7382 staining HepG2 cells(4h of LPS treatment) by IF/ICC. The samples were fixed with PFA and permeabilized in 0.1% Triton X-100, then blocked in 10% serum for 45 minutes at 25°C. Samples were then incubated with primary Ab(AF7382 1:200) and mouse anti-beta tubulin Ab(T0023 1:200) for 1 hour at 37°C. An AlexaFluor594 conjugated goat anti-rabbit IgG(H+L) Ab(Red) and an AlexaFluor488 conjugated goat anti-mouse IgG(H+L) Ab(Green) were used as the secondary Ab.

The nuclear counter stain is DAPI(blue).

IMPORTANT: For western blot, incubate membrane with diluted primary Ab in 5% w/v milk , 1X TBS, 0.1% Tween@20 at 4°C with gentle shaking, overnight.

For Research Use Only. Not for use in diagnostic and therapeutic procedures. Not for resale without express authorization.