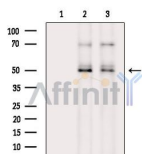


## Phospho-CDC20 (Thr70) Ab

[Images\(2\)](#)

Cat.#: AF7446	Concn.: ~1mg/ml	Mol.Wt.: 50KD
Size:	Source: Rabbit	Clonality: Polyclonal

Application:	WB 1:500-1:2000 *The optimal dilutions should be determined by the end user.
Reactivity:	Human, Mouse, Rat
Storage:	Rabbit IgG in phosphate buffered saline, pH 7.4, 150mM NaCl, 0.02% sodium azide and 50% glycerol. Store at -20 °C. Stable for 12 months from date of receipt.
Purification:	The Ab is from purified rabbit serum by affinity purification via sequential chromatography on phospho-peptide and non-phospho-peptide affinity columns.
Immunogen:	A synthesized peptide derived from human CDC20 around the phosphorylation site of Thr70.
Uniprot:	Q12834



Western blot analysis of extracts from various samples, using Phospho-CDC20 (Thr70) Ab.  
Lane 1: K562 cells(heat-shock treatment), blocked with antigen-specific peptides.  
Lane 2: K562 cells(heat-shock treatment).  
Lane 3: Mcf7 cells(heat-shock treatment).

**IMPORTANT:** For western blot, incubate membrane with diluted primary Ab in 5% w/v milk, 1X TBS, 0.1% Tween@20 at 4°C with gentle shaking, overnight.

For Research Use Only. Not for use in diagnostic and therapeutic procedures. Not for resale without express authorization.