

## Semaphorin 4B Ab

[Images\(3\)](#)

Cat.#: AF7598

Size:

Concn.: ~1mg/ml

Source: Rabbit

Mol.Wt.: 105KD

Clonality: Polyclonal

Application:

WB 1:500-1:2000

\*The optimal dilutions should be determined by the end user.

Reactivity:

Human,Mouse

Storage:

Rabbit IgG in phosphate buffered saline , pH 7.4, 150mM NaCl, 0.02% sodium azide and 50% glycerol. Store at -20 °C. Stable for 12 months from date of receipt.

Purification:

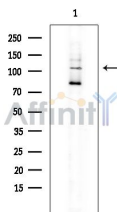
The antiserum was purified by peptide affinity chromatography using SulfoLink™ Coupling Resin (Thermo Fisher Scientific).

Immunogen:

A synthesized peptide derived from human Semaphorin 4B, corresponding to a region within C-terminal amino acids.

Uniprot:

Q9NPR2



Western blot analysis of extracts from Mouse testis, using Semaphorin 4B Ab at 1/1000 dilution.

Observed bands:110kD.

**IMPORTANT:** For western blot, incubate membrane with diluted primary Ab in 5% w/v milk , 1X TBS, 0.1% Tween@20 at 4°C with gentle shaking, overnight.

For Research Use Only. Not for use in diagnostic and therapeutic procedures. Not for resale without express authorization.