

## FANCA Ab

[Images\(3\)](#)

Cat.#: AF7613	Concn.: ~1mg/ml	Mol.Wt.: 162kDa
Size:	Source: Rabbit	Clonality: Polyclonal

**Application:** WB 1:500-1:2000  
\*The optimal dilutions should be determined by the end user.

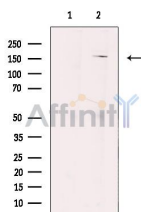
**Reactivity:** Human, Mouse

**Storage:** Rabbit IgG in phosphate buffered saline , pH 7.4, 150mM NaCl, 0.02% sodium azide and 50% glycerol. Store at -20 °C. Stable for 12 months from date of receipt.

**Purification:** The antiserum was purified by peptide affinity chromatography using SulfoLink™ Coupling Resin (Thermo Fisher Scientific).

**Immunogen:** A synthesized peptide derived from human FANCA, corresponding to a region within C-terminal amino acids.

**Uniprot:** O15360



Western blot analysis of extracts from HeLa cells, using FANCA Ab. The lane on the left was treated with blocking peptide.

**IMPORTANT:** For western blot, incubate membrane with diluted primary Ab in 5% w/v milk , 1X TBS, 0.1% Tween@20 at 4°C with gentle shaking, overnight.

For Research Use Only. Not for use in diagnostic and therapeutic procedures. Not for resale without express authorization.