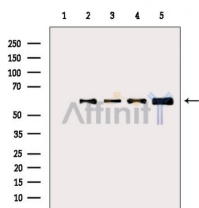


Phospho-AKT1 (Thr450) Ab

[Images\(15\)](#)

Cat.#: AF3259	Concn.: ~1mg/ml	Mol.Wt.: 60kDa
Size:	Source: Rabbit	Clonality: Polyclonal
Application:	WB 1:500-1:2000, IHC 1:50-1:200, IF/ICC 1:100-1:500 *The optimal dilutions should be determined by the end user.	
Reactivity:	Human,Mouse,Rat,Monkey	
Storage:	Rabbit IgG in phosphate buffered saline , pH 7.4, 150mM NaCl, 0.02% sodium azide and 50% glycerol. Store at -20 °C. Stable for 12 months from date of receipt.	
Purification:	The Ab is from purified rabbit serum by affinity purification via sequential chromatography on phospho-peptide and non-phospho-peptide affinity columns.	
Immunogen:	A synthesized peptide derived from human Akt1 around the phosphorylation site of Thr450.	
Uniprot:	P31749	
Description:	an AGC kinase that plays a critical role in controlling the balance between survival and AP0ptosis. Phosphorylated and activated by PDK1 in the PI3 kinase pathway.	



Western blot analysis of extracts from various samples, using Phospho-AKT1 (Thr450) Ab.

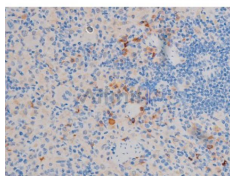
Lane 1: Rat muscle, blocked with antigen-specific peptides.

Lane 2: Rat muscle.

Lane 3: Mouse heart.

Lane 4: Vero cells (serum starvation treatment).

Lane 5: B16f10 cells (serum starvation treatment).



AF3259 at 1/200 staining Rat spleen tissue sections by IHC-P. The tissue was formaldehyde fixed and a heat mediated antigen retrieval step in citrate buffer was performed. The tissue was then blocked and incubated with the Ab for 1.5 hours at 22°C. An HRP conjugated goat anti-rabbit Ab was used as the secondary Ab.

IMPORTANT: For western blot, incubate membrane with diluted primary Ab in 5% w/v milk , 1X TBS, 0.1% Tween@20 at 4°C with gentle shaking, overnight.



Affinity Biosciences

website: www.affbiotech.com

order: order@affbiotech.com

For Research Use Only. Not for use in diagnostic and therapeutic procedures. Not for resale without express authorization.