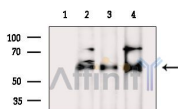


## Phospho-AKT1 (Ser129) Ab

[Images\(2\)](#)

Cat.#: AF3261	Concn.: ~1mg/ml	Mol.Wt.: 65kDa
Size:	Source: Rabbit	Clonality: Polyclonal
Application:	WB 1:500-1:2000, IF/ICC 1:100-1:500 *The optimal dilutions should be determined by the end user.	
Reactivity:	Human, Mouse, Rat	
Storage:	Rabbit IgG in phosphate buffered saline, pH 7.4, 150mM NaCl, 0.02% sodium azide and 50% glycerol. Store at -20 °C. Stable for 12 months from date of receipt.	
Purification:	The Ab is from purified rabbit serum by affinity purification via sequential chromatography on phospho-peptide and non-phospho-peptide affinity columns.	
Immunogen:	A synthesized peptide derived from human Akt1 around the phosphorylation site of Ser129.	
Uniprot:	P31749	
Description:	an AGC kinase that plays a critical role in controlling the balance between survival and Apoptosis. Phosphorylated and activated by PDK1 in the PI3 kinase pathway.	



Western blot analysis of extracts from various samples, using Phospho-AKT1 (Ser129) Ab.

Lane 1: 3t3-11 cells(heat-shock treatment), blocked with antigen-specific peptides.

Lane 2: 3t3-11 cells(heat-shock treatment).

Lane 3: Mcf7 cells(heat-shock treatment).

Lane 4: K562 cells(heat-shock treatment).

**IMPORTANT:** For western blot, incubate membrane with diluted primary Ab in 5% w/v milk, 1X TBS, 0.1% Tween@20 at 4°C with gentle shaking, overnight.

For Research Use Only. Not for use in diagnostic and therapeutic procedures. Not for resale without express authorization.