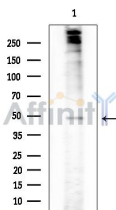


BCL-3 Ab

[Images\(3\)](#)

| | | |
|---------------|-----------------|-----------------------|
| Cat.#: AF7756 | Concn.: ~1mg/ml | Mol.Wt.: 47kDa |
| Size: | Source: Rabbit | Clonality: Polyclonal |

| | |
|---------------|--|
| Application: | WB 1:500-1:2000 *The optimal dilutions should be determined by the end user. |
| Reactivity: | Human,Mouse |
| Storage: | Rabbit IgG in phosphate buffered saline , pH 7.4, 150mM NaCl, 0.02% sodium azide and 50% glycerol. Store at -20 °C. Stable for 12 months from date of receipt. |
| Purification: | The antiserum was purified by peptide affinity chromatography using SulfoLink™ Coupling Resin (Thermo Fisher Scientific). |
| Immunogen: | A synthesized peptide derived from human BCL-3, corresponding to a region within N-terminal amino acids. |
| Uniprot: | P20749 |



Western blot analysis of extracts from COLO205 cells(heat-shock treatment), using BCL-3 Ab at 1/1000 dilution.
Observed bands:47kD.

IMPORTANT: For western blot, incubate membrane with diluted primary Ab in 5% w/v milk , 1X TBS, 0.1% Tween@20 at 4°C with gentle shaking, overnight.

For Research Use Only. Not for use in diagnostic and therapeutic procedures. Not for resale without express authorization.