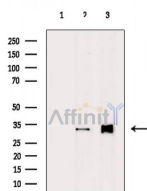


RPS6 Ab

[References\(2\)](#) [Images\(6\)](#)

Cat.#: AF7831	Concn.: ~1mg/ml	Mol.Wt.: 32kDa, 37 kDa
Size:	Source: Rabbit	Clonality: Polyclonal
Application:	WB 1:500-1:2000 *The optimal dilutions should be determined by the end user.	
Reactivity:	Human, Mouse, Rat	
Storage:	Rabbit IgG in phosphate buffered saline, pH 7.4, 150mM NaCl, 0.02% sodium azide and 50% glycerol. Store at -20 °C. Stable for 12 months from date of receipt.	
Purification:	The antiserum was purified by peptide affinity chromatography using SulfoLink™ Coupling Resin (Thermo Fisher Scientific).	
Immunogen:	A synthesized peptide derived from human RPS6, corresponding to a region within the internal amino acids.	
Uniprot:	P62753	



Western blot analysis of extracts from various samples, using RPS6 Ab.
Lane 1: Rat liver, blocked with antigen-specific peptides,
Lane 2: Rat liver,
Lane 3: RAW264.7 cells (LPS 4h treatment).

IMPORTANT: For western blot, incubate membrane with diluted primary Ab in 5% w/v milk, 1X TBS, 0.1% Tween@20 at 4°C with gentle shaking, overnight.

For Research Use Only. Not for use in diagnostic and therapeutic procedures. Not for resale without express authorization.