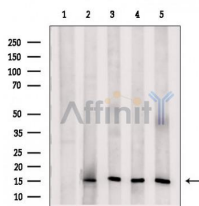


## Histone H3 Ab

[Images\(2\)](#)

|               |                 |                       |
|---------------|-----------------|-----------------------|
| Cat.#: AF7835 | Concn.: ~1mg/ml | Mol.Wt.: 15kDa        |
| Size:         | Source: Rabbit  | Clonality: Polyclonal |

|               |   |
|---------------|---|
| Application:  | WB 1:500-1:2000<br>*The optimal dilutions should be determined by the end user.   |
| Reactivity:   | Human, Mouse, Rat, Monkey   |
| Storage:      | Rabbit IgG in phosphate buffered saline, pH 7.4, 150mM NaCl, 0.02% sodium azide and 50% glycerol. Store at -20 °C. Stable for 12 months from date of receipt. |
| Purification: | The antiserum was purified by peptide affinity chromatography using SulfoLink™ Coupling Resin (Thermo Fisher Scientific).                                     |
| Immunogen:    | A synthesized peptide derived from human Histone H3, corresponding to a region within the internal amino acids.   |
| Uniprot:      | P68431  |



Western blot analysis of extracts from various samples, using Histone H3 Ab.  
 Lane 1: VERO cells, treated with blocking peptide;  
 Lane 2: VERO cells;  
 Lane 3: RAW264.7 cells;  
 Lane 4: HepG2 cells;  
 Lane 5: EC304.

**IMPORTANT:** For western blot, incubate membrane with diluted primary Ab in 5% w/v milk, 1X TBS, 0.1% Tween@20 at 4°C with gentle shaking, overnight.

For Research Use Only. Not for use in diagnostic and therapeutic procedures. Not for resale without express authorization.