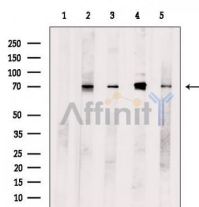


## Sin1 Ab

[Images\(2\)](#)

Cat.#: AF7936	Concn.: ~1mg/ml	Mol.Wt.: 59kDa, 70 kDa
Size:	Source: Rabbit	Clonality: Polyclonal

Application:	WB 1:500-1:2000 *The optimal dilutions should be determined by the end user.
Reactivity:	Human, Mouse, Rat
Storage:	Rabbit IgG in phosphate buffered saline , pH 7.4, 150mM NaCl, 0.02% sodium azide and 50% glycerol. Store at -20 °C. Stable for 12 months from date of receipt.
Purification:	The antiserum was purified by peptide affinity chromatography using SulfoLink™ Coupling Resin (Thermo Fisher Scientific).
Immunogen:	A synthesized peptide derived from human Sin1, corresponding to a region within C-terminal amino acids.
Uniprot:	Q9BPZ7



Western blot analysis of extracts from various samples, using Sin1 Ab.  
 Lane 1: MCF7, treated with blocking peptide;  
 Lane 2: MCF7;  
 Lane 3: Rat brain;  
 Lane 4: 293;  
 Lane 5: Mouse heart.

Observed bands: 70 kDa.

**IMPORTANT:** For western blot, incubate membrane with diluted primary Ab in 5% w/v milk , 1X TBS, 0.1% Tween@20 at 4°C with gentle shaking, overnight.

For Research Use Only. Not for use in diagnostic and therapeutic procedures. Not for resale without express authorization.