

Phospho-RYR3 (Ser160) Ab

[Images\(3\)](#)

Cat.#: AF4311
Size:

Concn.: ~1mg/ml
Source: Rabbit

Mol.Wt.: 565 kDa
Clonality: Polyclonal

Application:

WB 1:500-1:2000

*The optimal dilutions should be determined by the end user.

Reactivity:

Human, Mouse

Storage:

Rabbit IgG in phosphate buffered saline, pH 7.4, 150mM NaCl, 0.02% sodium azide and 50% glycerol. Store at -20 °C. Stable for 12 months from date of receipt.

Purification:

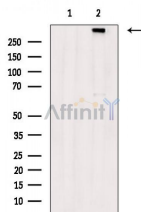
The Ab is from purified rabbit serum by affinity purification via sequential chromatography on phospho-peptide and non-phospho-peptide affinity columns.

Immunogen:

A synthesized peptide derived from human RYR3 around the phosphorylation site of Ser160.

Uniprot:

Q15413



Western blot analysis of extracts from HepG2 cells (LPS 4h treatment), using Phospho-RYR3 (Ser160) Ab. The lane on the left was treated with blocking peptide.

IMPORTANT: For western blot, incubate membrane with diluted primary Ab in 5% w/v milk, 1X TBS, 0.1% Tween@20 at 4°C with gentle shaking, overnight.

For Research Use Only. Not for use in diagnostic and therapeutic procedures. Not for resale without express authorization.