

Phospho-SAR1A (Thr139) Ab

[Images\(2\)](#)

Cat.#: AF4330
Size:

Concn.: ~1mg/ml
Source: Rabbit

Mol.Wt.: 22kDa
Clonality: Polyclonal

Application:

WB 1:500-1:2000

*The optimal dilutions should be determined by the end user.

Reactivity:

Human,Mouse,Rat

Storage:

Rabbit IgG in phosphate buffered saline , pH 7.4, 150mM NaCl, 0.02% sodium azide and 50% glycerol. Store at -20 °C. Stable for 12 months from date of receipt.

Purification:

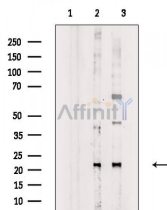
The Ab is from purified rabbit serum by affinity purification via sequential chromatography on phospho-peptide and non-phospho-peptide affinity columns.

Immunogen:

A synthesized peptide derived from human SAR1A around the phosphorylation site of Thr139.

Uniprot:

Q9NR31



Western blot analysis of extracts from various samples, using Phospho-SAR1A (Thr139) Ab.

Lane 1: RAW264.7 cells(LPS 4h treatment), blocked with antigen-specific peptides,

Lane 2: RAW264.7 cells(LPS 4h treatment),

Lane 3: HepG2 cells(LPS 4h treatment).

IMPORTANT: For western blot, incubate membrane with diluted primary Ab in 5% w/v milk , 1X TBS, 0.1% Tween@20 at 4°C with gentle shaking, overnight.

For Research Use Only. Not for use in diagnostic and therapeutic procedures. Not for resale without express authorization.