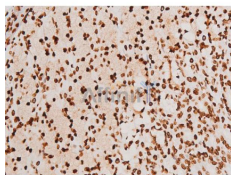


Phospho-SYK (Tyr348) Ab

[References\(1\)](#) [Images\(27\)](#)

Cat.#: AF3314	Concn.: ~1mg/ml	Mol.Wt.: 72kDa
Size:	Source: Rabbit	Clonality: Polyclonal
Application:	WB 1:500-1:2000, IHC 1:100-1:500, IF/ICC 1:100-1:500 *The optimal dilutions should be determined by the end user.	
Reactivity:	Human, Mouse, Rat, Monkey	
Storage:	Rabbit IgG in phosphate buffered saline, pH 7.4, 150mM NaCl, 0.02% sodium azide and 50% glycerol. Store at -20 °C. Stable for 12 months from date of receipt.	
Purification:	The Ab is from purified rabbit serum by affinity purification via sequential chromatography on phospho-peptide and non-phospho-peptide affinity columns.	
Immunogen:	A synthesized peptide derived from human SYK around the phosphorylation site of Tyr348.	
Uniprot:	P43405	
Description:	Syk is a cytoplasmic tyrosine kinase of the SYK family containing two SH2 domains. Plays a central role in the B cell receptor (BCR) response. An upstream activator of the PI3K, PLCgamma2, and Rac/cdc42 pathways in the BCR response.	



AF3314 at 1/200 staining Rat gastric tissue sections by IHC-P. The tissue was formaldehyde fixed and a heat mediated antigen retrieval step in citrate buffer was performed. The tissue was then blocked and incubated with the Ab for 1.5 hours at 22°C. An HRP conjugated goat anti-rabbit Ab was used as the secondary Ab.

IMPORTANT: For western blot, incubate membrane with diluted primary Ab in 5% w/v milk, 1X TBS, 0.1% Tween@20 at 4°C with gentle shaking, overnight.

For Research Use Only. Not for use in diagnostic and therapeutic procedures. Not for resale without express authorization.