

Phospho-JNK1/2/3 (Tyr185) Ab

[References\(8\)](#) [Images\(6\)](#)

Cat.#: AF3320	Concn.: ~1mg/ml	Mol.Wt.: 45kDa
Size:	Source: Rabbit	Clonality: Polyclonal

Application: WB 1:500-1:2000, IHC 1:50-1:200, IF/ICC 1:100-1:500
*The optimal dilutions should be determined by the end user.

Reactivity: Human,Mouse,Rat

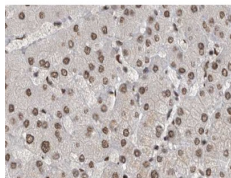
Storage: Rabbit IgG in phosphate buffered saline , pH 7.4, 150mM NaCl, 0.02% sodium azide and 50% glycerol. Store at -20 °C. Stable for 12 months from date of receipt.

Purification: The Ab is from purified rabbit serum by affinity purification via sequential chromatography on phospho-peptide and non-phospho-peptide affinity columns.

Immunogen: A synthesized peptide derived from human SAPK/JNK around the phosphorylation site of Tyr185.

Uniprot: P45983/P45984/P53779

Description: JNK3 a protein kinase of the MAPK family that is potently activated by a variety of environmental stress and pro-inflammatory cytokines. Brain-selective JNK isoform.



AF3320 at 1/200 staining human liver cancer tissue sections by IHC-P. The tissue was formaldehyde fixed and a heat mediated antigen retrieval step in citrate buffer was performed. The tissue was then blocked and incubated with the Ab for 1.5 hours at 22°C. An HRP conjugated goat anti-rabbit Ab was used as the secondary Ab.

IMPORTANT: For western blot, incubate membrane with diluted primary Ab in 5% w/v milk , 1X TBS, 0.1% Tween@20 at 4°C with gentle shaking, overnight.

For Research Use Only. Not for use in diagnostic and therapeutic procedures. Not for resale without express authorization.