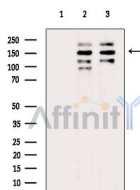


ASPP2 Ab

[Images\(3\)](#)

Cat.#: AF4619	Concn.: ~1mg/ml	Mol.Wt.: 126kDa
Size:	Source: Rabbit	Clonality: Polyclonal

Application:	WB 1:500-1:2000 *The optimal dilutions should be determined by the end user.
Reactivity:	Human,Mouse,Rat
Storage:	Rabbit IgG in phosphate buffered saline , pH 7.4, 150mM NaCl, 0.02% sodium azide and 50% glycerol. Store at -20 °C. Stable for 12 months from date of receipt.
Purification:	The antiserum was purified by peptide affinity chromatography using SulfoLink™ Coupling Resin (Thermo Fisher Scientific).
Immunogen:	A synthesized peptide derived from human ASPP2, corresponding to a region within the internal amino acids.
Uniprot:	Q13625



Western blot analysis of extracts from various samples, using ASPP2 Ab.
Lane 1: Hepg2 cells(h2o2 treatment), blocked with antigen-specific peptides.
Lane 2: Hepg2 cells(h2o2 treatment).
Lane 3: Raw264.7 cells(uv treatment).

IMPORTANT: For western blot, incubate membrane with diluted primary Ab in 5% w/v milk , 1X TBS, 0.1% Tween@20 at 4°C with gentle shaking, overnight.

For Research Use Only. Not for use in diagnostic and therapeutic procedures. Not for resale without express authorization.