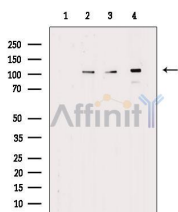


alpha-Actinin Ab

[Images\(2\)](#)

Cat.#: AF4629	Concn.: ~1mg/ml	Mol.Wt.: 105kDa
Size:	Source: Rabbit	Clonality: Polyclonal

Application:	WB 1:500-1:2000 *The optimal dilutions should be determined by the end user.
Reactivity:	Human, Mouse, Rat
Storage:	Rabbit IgG in phosphate buffered saline, pH 7.4, 150mM NaCl, 0.02% sodium azide and 50% glycerol. Store at -20 °C. Stable for 12 months from date of receipt.
Purification:	The antiserum was purified by peptide affinity chromatography using SulfoLink™ Coupling Resin (Thermo Fisher Scientific).
Immunogen:	A synthesized peptide derived from human alpha-Actinin, corresponding to a region within the internal amino acids.
Uniprot:	P12814



Western blot analysis of extracts from various samples, using alpha-Actinin Ab.

Lane 1: NIH-3T3 cells, blocked with antigen-specific peptides,
Lane 2: NIH-3T3 cells,
Lane 3: MDA-MB-231 cells,
Lane 4: EC304 cells.

IMPORTANT: For western blot, incubate membrane with diluted primary Ab in 5% w/v milk, 1X TBS, 0.1% Tween@20 at 4°C with gentle shaking, overnight.

For Research Use Only. Not for use in diagnostic and therapeutic procedures. Not for resale without express authorization.