

Phospho-MEK4/MKK4 (Thr261) Ab

[Images\(3\)](#)

Cat.#: AF3322	Concn.: ~1mg/ml	Mol.Wt.: 44kDa
Size:	Source: Rabbit	Clonality: Polyclonal

Application: WB 1:500-1:2000, IHC 1:50-1:200
*The optimal dilutions should be determined by the end user.

Reactivity: Human, Mouse, Rat

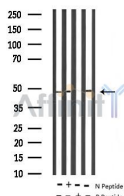
Storage: Rabbit IgG in phosphate buffered saline, pH 7.4, 150mM NaCl, 0.02% sodium azide and 50% glycerol. Store at -20 °C. Stable for 12 months from date of receipt.

Purification: The Ab is from purified rabbit serum by affinity purification via sequential chromatography on phospho-peptide and non-phospho-peptide affinity columns.

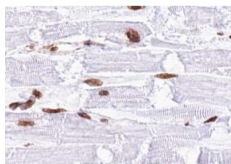
Immunogen: A synthesized peptide derived from human SEK1/MKK4 around the phosphorylation site of Thr261.

Uniprot: P45985

Description: MKK4 dual specificity kinase of the STE7 family that phosphorylates and activates JNK1 and -2 as well as p38 but not ERK1 or -2. Mediates cellular responses to various cellular stresses and inflammatory cytokines. Phosphorylation by Akt inhibits MKK4 and suppresses stress-activated signal transduction.



Western blot analysis of Phospho-MEK4/MKK4 (Thr261) Ab expression in mouse brain and rat kidney tissues lysates.



AF3322 at 1/100 staining human Heart muscle tissue sections by IHC-P. The tissue was formaldehyde fixed and a heat mediated antigen retrieval step in citrate buffer was performed. The tissue was then blocked and incubated with the Ab for 1.5 hours at 22°C. An HRP conjugated goat anti-rabbit Ab was used as the secondary Ab.

in 5% w/v milk , 1X TBS, 0.1% Tween@20 at 4°C with gentle shaking,
overnight.

For Research Use Only. Not for use in diagnostic and therapeutic
procedures. Not for resale without express authorization.