

## Phospho-VASP (Ser157) Ab

[References\(3\)](#) [Images\(6\)](#)

Cat.#: AF3337  
Size:

Concn.: ~1mg/ml  
Source: Rabbit

Mol.Wt.: 46kDa  
Clonality: Polyclonal

Application:

WB 1:500-1:2000, IHC 1:50-1:200, IF/ICC 1:100-1:500  
\*The optimal dilutions should be determined by the end user.

Reactivity:

Human, Mouse, Rat

Storage:

Rabbit IgG in phosphate buffered saline, pH 7.4, 150mM NaCl, 0.02% sodium azide and 50% glycerol. Store at -20 °C. Stable for 12 months from date of receipt.

Purification:

The Ab is from purified rabbit serum by affinity purification via sequential chromatography on phospho-peptide and non-phospho-peptide affinity columns.

Immunogen:

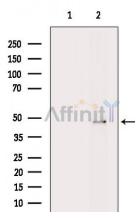
A synthesized peptide derived from human VASP around the phosphorylation site of Ser157.

Uniprot:

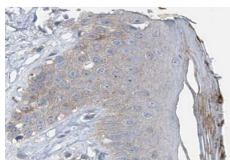
P50552

Description:

Vasodilator-stimulated phosphoprotein (VASP) is a member of the Ena-VASP protein family. Ena-VASP family members contain an EHV1 N-terminal domain that binds proteins containing E/DFPPPPXD/E motifs and targets Ena-VASP proteins to focal adhesions.



Western blot analysis of extracts from Mouse lung, using Phospho-VASP (Ser157) Ab. The lane on the left was treated with blocking peptide.



AF3337 at 1/100 staining human Skin cancer tissue sections by IHC-P. The tissue was formaldehyde fixed and a heat mediated antigen retrieval step in citrate buffer was performed. The tissue was then blocked and incubated with the Ab for 1.5 hours at 22°C. An HRP conjugated goat anti-rabbit Ab was used as the secondary Ab.

**IMPORTANT:** For western blot, incubate membrane with diluted primary Ab in 5% w/v milk, 1X TBS, 0.1% Tween@20 at 4°C with gentle shaking,

---

overnight.

---

For Research Use Only. Not for use in diagnostic and therapeutic procedures. Not for resale without express authorization.