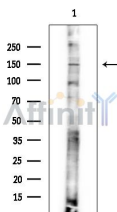


## c-Kit Ab

[Images\(2\)](#)

|               |  |                        |
|---------------|--|------------------------|
| Cat.#: AF4701 | Concn.: ~1mg/ml  | Mol.Wt.: 120kDa,145kDa |
| Size:         | Source: Rabbit   | Clonality: Polyclonal  |
| Application:  | WB 1:500-1:2000<br>*The optimal dilutions should be determined by the end user.  |                        |
| Reactivity:   | Human,Mouse,Rat  |                        |
| Storage:      | Rabbit IgG in phosphate buffered saline , pH 7.4, 150mM NaCl, 0.02% sodium azide and 50% glycerol. Store at -20 °C. Stable for 12 months from date of receipt. |                        |
| Purification: | The antiserum was purified by peptide affinity chromatography using SulfoLink™ Coupling Resin (Thermo Fisher Scientific).                                      |                        |
| Immunogen:    | A synthesized peptide derived from human c-Kit, corresponding to a region within the internal amino acids.   |                        |
| Uniprot:      | P10721   |                        |



Western blot analysis of extracts from Rat brain, using c-Kit Ab at 1/1000 dilution.  
Observed bands:150kD.

**IMPORTANT:** For western blot, incubate membrane with diluted primary Ab in 5% w/v milk , 1X TBS, 0.1% Tween@20 at 4°C with gentle shaking, overnight.

For Research Use Only. Not for use in diagnostic and therapeutic procedures. Not for resale without express authorization.