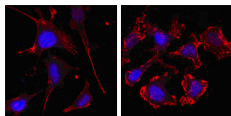


## Goat Anti-Mouse IgG (H+L) CY3-conjugated

[References\(2\)](#) [Images\(1\)](#)

Cat.#: S0012	Concn.: 1mg/ml	Mol.Wt.:
Size:	Source: Goat	Clonality: Polyclonal
Application:	WB 1:100 – 1:500, IF/ICC 1:100-1:500 *The optimal dilutions should be determined by the end user.	
Reactivity:	Mouse	
Storage:	0.01M Sodium phosphate, 0.25M NaCl, 50% glycerol, pH7.6.Store at -20°?avoid repeated thawing and freezing.	
Purification:	Affinity-chromatography.	
Immunogen:	The antiserum was developed in goat using the Mouse IgG as the immunogen.	
Conjugate:	CY3	



Confocal immunofluorescence analysis of SKBR-3 (left) and A549 (right) cells using beta Actin mouse mAb (red, the secondary Ab is Cy3-Goat anti mouse IgG).

Blue: DRAQ5 fluorescent DNA dye.

Red: Goat Anti-Mouse IgG(H+L) CY3-conjugated

**IMPORTANT:** For western blot, incubate membrane with diluted secondary Ab in 5% w/v milk, 1X TBS, 0.1% Tween@20 at 37°C, 2H.

For Research Use Only. Not for use in diagnostic and therapeutic procedures. Not for resale without express authorization.