

Liprin alpha 1 Ab

[Images\(2\)](#)

Cat.#: DF12102

Concn.: ~1mg/ml

Mol.Wt.: 160 kDa

Size:

Source: Rabbit

Clonality: Polyclonal

Application:

WB 1:500-1:2000, IHC 1:50-1:200

*The optimal dilutions should be determined by the end user.

Reactivity:

Human, Mouse, Rat

Storage:

Rabbit IgG in phosphate buffered saline, pH 7.4, 150mM NaCl, 0.02% sodium azide and 50% glycerol. Store at -20 °C. Stable for 12 months from date of receipt.

Purification:

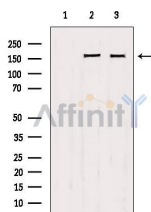
The antiserum was purified by peptide affinity chromatography using SulfoLink™ Coupling Resin (Thermo Fisher Scientific).

Immunogen:

A synthesized peptide derived from human Liprin alpha 1, corresponding to a region within C-terminal amino acids.

Uniprot:

Q13136



Western blot analysis of extracts from various samples, using Liprin alpha 1 Ab.

Lane 1: 293 treated with blocking peptide.

Lane 2: 293;

Lane 3: hela;

IMPORTANT: For western blot, incubate membrane with diluted primary Ab in 5% w/v milk, 1X TBS, 0.1% Tween@20 at 4°C with gentle shaking, overnight.

For Research Use Only. Not for use in diagnostic and therapeutic procedures. Not for resale without express authorization.