

## PPAT Ab

[Images\(4\)](#)

Cat.#: DF12131  
Size:

Concn.: ~1mg/ml  
Source: Rabbit

Mol.Wt.: 50-56kd  
Clonality: Polyclonal

Application:

WB 1:500-1:2000, IHC 1:50-1:200  
\*The optimal dilutions should be determined by the end user.

Reactivity:

Human, Mouse, Rat

Storage:

Rabbit IgG in phosphate buffered saline, pH 7.4, 150mM NaCl, 0.02% sodium azide and 50% glycerol. Store at -20 °C. Stable for 12 months from date of receipt.

Purification:

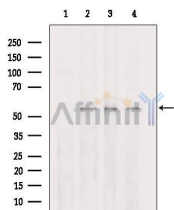
The antiserum was purified by peptide affinity chromatography using SulfoLink™ Coupling Resin (Thermo Fisher Scientific).

Immunogen:

A synthesized peptide derived from human PPAT, corresponding to a region within N-terminal amino acids.

Uniprot:

Q06203



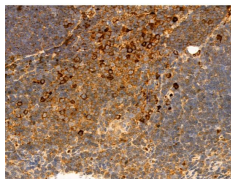
Western blot analysis of extracts from various samples, using PPAT Ab.

Lane 1: RAW264.7 cells, treated with blocking peptide;

Lane 2: RAW264.7 cells;

Lane 3: Pc12;

Lane 4: Mcf7.



DF12131 at 1/100 staining Mouse thymus tissue by IHC-P. The sample was formaldehyde fixed and a heat mediated antigen retrieval step in citrate buffer was performed. The sample was then blocked and incubated with the primary Ab at 4°C overnight. An HRP conjugated anti-Rabbit Ab was used as the secondary Ab.

**IMPORTANT:** For western blot, incubate membrane with diluted primary Ab in 5% w/v milk, 1X TBS, 0.1% Tween@20 at 4°C with gentle shaking, overnight.

For Research Use Only. Not for use in diagnostic and therapeutic procedures. Not for resale without express authorization.