

## FAF2 Ab

[Images\(5\)](#)

Cat.#: DF12202  
Size:

Concn.: ~1mg/ml  
Source: Rabbit

Mol.Wt.: 53 kDa  
Clonality: Polyclonal

Application:

WB 1:500-1:2000, IHC 1:50-1:200  
\*The optimal dilutions should be determined by the end user.

Reactivity:

Human, Mouse, Rat

Storage:

Rabbit IgG in phosphate buffered saline, pH 7.4, 150mM NaCl, 0.02% sodium azide and 50% glycerol. Store at -20 °C. Stable for 12 months from date of receipt.

Purification:

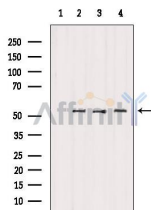
The antiserum was purified by peptide affinity chromatography using SulfoLink™ Coupling Resin (Thermo Fisher Scientific).

Immunogen:

A synthesized peptide derived from human FAF2, corresponding to a region within the internal amino acids.

Uniprot:

Q96CS3



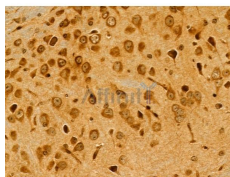
Western blot analysis of extracts from various samples, using FAF2 Ab.

Lane 1: 293 cells treated with the blocking peptide;

Lane 2: 293 cells;

Lane 3: HeLa cells;

Lane 4: Mouse liver tissue.



DF12202 at 1/100 staining Mouse brain tissue by IHC-P. The sample was formaldehyde fixed and a heat mediated antigen retrieval step in citrate buffer was performed. The sample was then blocked and incubated with the primary Ab at 4°C overnight. An HRP conjugated anti-Rabbit Ab was used as the secondary Ab.

**IMPORTANT:** For western blot, incubate membrane with diluted primary Ab in 5% w/v milk, 1X TBS, 0.1% Tween@20 at 4°C with gentle shaking, overnight.

For Research Use Only. Not for use in diagnostic and therapeutic procedures. Not for resale without express authorization.