

Antizyme inhibitor 1 Ab

[Images\(2\)](#)

Cat.#: DF12348	Concn.: ~1mg/ml	Mol.Wt.: 49.5 kDa
Size:	Source: Rabbit	Clonality: Polyclonal

Application: WB 1:500-1:2000, IHC 1:50-1:200
*The optimal dilutions should be determined by the end user.

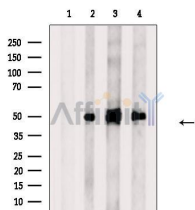
Reactivity: Human, Mouse, Rat

Storage: Rabbit IgG in phosphate buffered saline, pH 7.4, 150mM NaCl, 0.02% sodium azide and 50% glycerol. Store at -20 °C. Stable for 12 months from date of receipt.

Purification: The antiserum was purified by peptide affinity chromatography using SulfoLink™ Coupling Resin (Thermo Fisher Scientific).

Immunogen: A synthesized peptide derived from human Antizyme inhibitor 1, corresponding to a region within the internal amino acids.

Uniprot: O14977



Western blot analysis of extracts from various samples, using Antizyme inhibitor 1 Ab.

Lane 1: Myeloma cells, treated with blocking peptide;
Lane 2: Myeloma cells;
Lane 3: HeLa cells;
Lane 4: B16F10 cells.

IMPORTANT: For western blot, incubate membrane with diluted primary Ab in 5% w/v milk, 1X TBS, 0.1% Tween@20 at 4°C with gentle shaking, overnight.

For Research Use Only. Not for use in diagnostic and therapeutic procedures. Not for resale without express authorization.