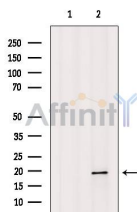


Cofilin Ab

[References\(1\)](#) [Images\(2\)](#)

Cat.#: AF6232	Concn.: ~1mg/ml	Mol.Wt.: 19kDa
Size:	Source: Rabbit	Clonality: Polyclonal

Application:	WB 1:500-1:2000, IF/ICC 1:100-1:500 *The optimal dilutions should be determined by the end user.
Reactivity:	Human,Mouse,Rat
Storage:	Rabbit IgG in phosphate buffered saline , pH 7.4, 150mM NaCl, 0.02% sodium azide and 50% glycerol. Store at -20 °C. Stable for 12 months from date of receipt.
Purification:	The antiserum was purified by peptide affinity chromatography using SulfoLink™ Coupling Resin (Thermo Fisher Scientific).
Immunogen:	A synthesized peptide derived from human Cofilin, corresponding to a region within N-terminal amino acids.
Uniprot:	P23528
Description:	cofilin 1 a cytoskeletal protein that controls actin depolymerization. Has a 5-10-fold higher affinity for ATP-actin monomers than cofilin-1. May promote filament assembly rather than disassembly. Two alternatively spliced variants are described.



Western blot analysis of extracts from MCF7, using Cofilin Ab. The lane on the left was treated with blocking peptide.

IMPORTANT: For western blot, incubate membrane with diluted primary Ab in 5% w/v milk , 1X TBS, 0.1% Tween@20 at 4°C with gentle shaking, overnight.

For Research Use Only. Not for use in diagnostic and therapeutic procedures. Not for resale without express authorization.