

NCKAP1 Ab

[Images\(3\)](#)

Cat.#: DF12428
Size:

Concn.: ~1mg/ml
Source: Rabbit

Mol.Wt.: 115-125 kDa
Clonality: Polyclonal

Application:

WB 1:500-1:2000, IHC 1:50-1:200

*The optimal dilutions should be determined by the end user.

Reactivity:

Human,Mouse,Rat

Storage:

Rabbit IgG in phosphate buffered saline , pH 7.4, 150mM NaCl, 0.02% sodium azide and 50% glycerol. Store at -20 °C. Stable for 12 months from date of receipt.

Purification:

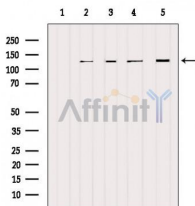
The antiserum was purified by peptide affinity chromatography using SulfoLink™ Coupling Resin (Thermo Fisher Scientific).

Immunogen:

A synthesized peptide derived from human NCKAP1, corresponding to a region within the internal amino acids.

Uniprot:

Q9Y2A7



Western blot analysis of extracts from various samples, using NCKAP1 Ab.

Lane 1: Pc12 treated with blocking peptide;

Lane 2: Pc12;

Lane 3: 3t3;

Lane 4: HeLa;

Lane 5: MCF7.



DF12428 at 1/100 staining Rat muscle tissue by IHC-P. The sample was formaldehyde fixed and a heat mediated antigen retrieval step in citrate buffer was performed. The sample was then blocked and incubated with the primary Ab at 4°C overnight. An HRP conjugated anti-Rabbit Ab was used as the secondary Ab.

IMPORTANT: For western blot, incubate membrane with diluted primary Ab in 5% w/v milk , 1X TBS, 0.1% Tween@20 at 4°C with gentle shaking, overnight.

For Research Use Only. Not for use in diagnostic and therapeutic procedures. Not for resale without express authorization.