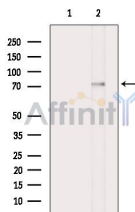


## Phospho-BMAL1 (Ser42) Ab

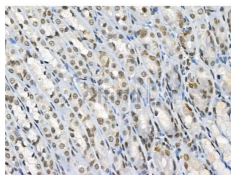
[Images\(5\)](#)

|               |                 |                       |
|---------------|-----------------|-----------------------|
| Cat.#: AF2326 | Concn.: ~1mg/ml | Mol.Wt.: 78kDa        |
| Size:         | Source: Rabbit  | Clonality: Polyclonal |

|               |  |
|---------------|--|
| Application:  | WB 1:500-1:2000, IHC 1:50-1:200<br>*The optimal dilutions should be determined by the end user.  |
| Reactivity:   | Human,Mouse,Rat  |
| Storage:      | Rabbit IgG in phosphate buffered saline , pH 7.4, 150mM NaCl, 0.02% sodium azide and 50% glycerol. Store at -20 °C. Stable for 12 months from date of receipt. |
| Purification: | The Ab is from purified rabbit serum by affinity purification via sequential chromatography on phospho-peptide and non-phospho-peptide affinity columns.       |
| Immunogen:    | A synthesized peptide derived from human BMAL1 around the phosphorylation site of Ser42.   |
| Uniprot:      | O00327   |



Western blot analysis of extracts from HepG2 cells(heat-shock treatment), using Phospho-BMAL1 (Ser42) Ab. The lane on the left was treated with blocking peptide.



AF2326 at 1/100 staining Rat stomach tissue by IHC-P. The sample was formaldehyde fixed and a heat mediated antigen retrieval step in citrate buffer was performed. The sample was then blocked and incubated with the primary Ab at 4°C overnight. An HRP conjugated anti-Rabbit Ab was used as the secondary Ab.

**IMPORTANT:** For western blot, incubate membrane with diluted primary Ab in 5% w/v milk , 1X TBS, 0.1% Tween@20 at 4°C with gentle shaking, overnight.

For Research Use Only. Not for use in diagnostic and therapeutic procedures. Not for resale without express authorization.