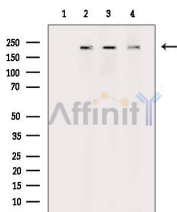


Phospho-Rictor (Thr1135) Ab

[Images\(3\)](#)

Cat.#: AF2397	Concn.: ~1mg/ml	Mol.Wt.: 200kDa
Size:	Source: Rabbit	Clonality: Polyclonal

Application:	WB 1:500-1:2000, IHC 1:50-1:200 *The optimal dilutions should be determined by the end user.
Reactivity:	Human,Mouse
Storage:	Rabbit IgG in phosphate buffered saline , pH 7.4, 150mM NaCl, 0.02% sodium azide and 50% glycerol. Store at -20 °C. Stable for 12 months from date of receipt.
Purification:	The Ab is from purified rabbit serum by affinity purification via sequential chromatography on phospho-peptide and non-phospho-peptide affinity columns.
Immunogen:	A synthesized peptide derived from human Rictor around the phosphorylation site of Thr1135.
Uniprot:	Q6R327



Western blot analysis of extracts from 3T3-L1 cells(heat-shock treatment) HepG2 cells(heat-shock treatment) Hela cells(heat-shock treatment), using Phospho-Rictor (Thr1135) Ab. The lane on the left was treated with blocking peptide.

IMPORTANT: For western blot, incubate membrane with diluted primary Ab in 5% w/v milk , 1X TBS, 0.1% Tween@20 at 4°C with gentle shaking, overnight.

For Research Use Only. Not for use in diagnostic and therapeutic procedures. Not for resale without express authorization.