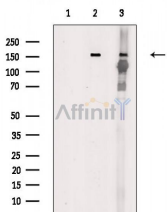


Phospho-TIE2 (Tyr992) Ab

[Images\(2\)](#)

Cat.#: AF2424	Concn.: ~1mg/ml	Mol.Wt.: 160kDa
Size:	Source: Rabbit	Clonality: Polyclonal

Application:	WB 1:500-1:2000, IHC 1:50-1:200 *The optimal dilutions should be determined by the end user.
Reactivity:	Human, Mouse, Rat
Storage:	Rabbit IgG in phosphate buffered saline, pH 7.4, 150mM NaCl, 0.02% sodium azide and 50% glycerol. Store at -20 °C. Stable for 12 months from date of receipt.
Purification:	The Ab is from purified rabbit serum by affinity purification via sequential chromatography on phospho-peptide and non-phospho-peptide affinity columns.
Immunogen:	A synthesized peptide derived from human TIE2 around the phosphorylation site of Tyr992.
Uniprot:	Q02763



Western blot analysis of extracts from various samples, using Phospho-TIE2 (Tyr992) Ab.
Lane 1: A549 cells (H₂O₂ treatment), blocked with antigen-specific peptides,
Lane 2: A549 cells (H₂O₂ treatment),
Lane 3: Mouse brain.

IMPORTANT: For western blot, incubate membrane with diluted primary Ab in 5% w/v milk, 1X TBS, 0.1% Tween@20 at 4°C with gentle shaking, overnight.

For Research Use Only. Not for use in diagnostic and therapeutic procedures. Not for resale without express authorization.