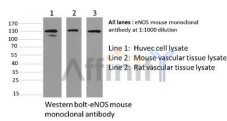


eNOS Ab

[Images\(1\)](#)

Cat.#: BF0705	Concn.: ~1mg/ml	Mol.Wt.: 140kDa
Size:	Source: Mouse	Clonality: Monoclonal

Application:	WB 1:500-1:2000, IHC 1:50-1:200 *The optimal dilutions should be determined by the end user.
Reactivity:	Human,Mouse,Rat
Storage:	Supplied in 10 mM PBS (pH 7.4), 0.1mg/ml BSA , 50% glycerol and 1% ProClin™ 300. Store at -20 °C. Stable for 12 months from date of receipt.
Purification:	Protein G purification.
Immunogen:	A synthesized peptide derived from human eNOS.
Uniprot:	P29474
Description:	eNOS endothelial constitutive nitric oxide synthase. Synthesizes nitric oxide (NO) from arginine and oxygen, which is implicated in vascular smooth muscle relaxation through a cGMP-mediated signal transduction pathway. NO mediates vascular endothelial growth factor (VEGF)-induced angiogenesis in coronary vessels and promotes blood clotting through the activation of platelets. Induced in humans by caloric restriction. Stimulated by calcium/calmodulin. Inhibited by NOSIP and NOSTRIN.



Western blot analysis of eNOS mouse monoclonal Ab expression in HuvEc, Mouse vascular and Rat vascular cell/tissue lysates.

IMPORTANT: For western blot, incubate membrane with diluted primary Ab in 5% w/v milk , 1X TBS, 0.1% Tween@20 at 4°C with gentle shaking, overnight.

For Research Use Only. Not for use in diagnostic and therapeutic procedures. Not for resale without express authorization.