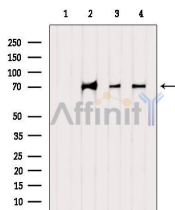


INTS10 Ab

[Images\(2\)](#)

| | | |
|----------------|-----------------|-----------------------|
| Cat.#: DF12643 | Concn.: ~1mg/ml | Mol.Wt.: 70 kDa |
| Size: | Source: Rabbit | Clonality: Polyclonal |

| | |
|---------------|---|
| Application: | WB 1:500-1:2000 *The optimal dilutions should be determined by the end user. |
| Reactivity: | Human, Mouse, Rat |
| Storage: | Rabbit IgG in phosphate buffered saline, pH 7.4, 150mM NaCl, 0.02% sodium azide and 50% glycerol. Store at -20 °C. Stable for 12 months from date of receipt. |
| Purification: | The antiserum was purified by peptide affinity chromatography using SulfoLink™ Coupling Resin (Thermo Fisher Scientific). |
| Immunogen: | A synthesized peptide derived from human INTS10, corresponding to a region within the internal amino acids. |
| Uniprot: | Q9NVR2 |



Western blot analysis of extracts from various samples, using INTS10 Ab.

Lane 1: Hela treated with blocking peptide;

Lane 2: Hela;

Lane 3: HepG2;

Lane 4: MCF7.

IMPORTANT: For western blot, incubate membrane with diluted primary Ab in 5% w/v milk, 1X TBS, 0.1% Tween@20 at 4°C with gentle shaking, overnight.

For Research Use Only. Not for use in diagnostic and therapeutic procedures. Not for resale without express authorization.