

HER2/ErbB2 Ab

[Images\(1\)](#)

| | | |
|---------------|-----------------|-----------------------|
| Cat.#: AF6070 | Concn.: ~1mg/ml | Mol.Wt.: 185kDa |
| Size: | Source: Rabbit | Clonality: Polyclonal |

Application: WB 1:500-1:2000, IHC 1:50-1:200, IF/ICC 1:100-1:500
*The optimal dilutions should be determined by the end user.

Reactivity: Human,Mouse,Rat

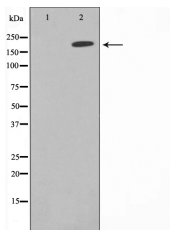
Storage: Rabbit IgG in phosphate buffered saline , pH 7.4, 150mM NaCl, 0.02% sodium azide and 50% glycerol. Store at -20 °C. Stable for 12 months from date of receipt.

Purification: The antiserum was purified by peptide affinity chromatography using SulfoLink™ Coupling Resin (Thermo Fisher Scientific).

Immunogen: A synthesized peptide derived from human HER2/ErbB2, corresponding to a region within the internal amino acids.

Uniprot: P04626

Description: This gene encodes a member of the epidermal growth factor (EGF) receptor family of receptor tyrosine kinases. This protein has no ligand binding domain of its own and therefore cannot bind growth factors.



Western blot analysis of HER2 expression in MDA-MB-231 whole cell lysates, The lane on the left was treated with the antigen-specific peptide.

IMPORTANT: For western blot, incubate membrane with diluted primary Ab in 5% w/v milk , 1X TBS, 0.1% Tween@20 at 4°C with gentle shaking, overnight.

For Research Use Only. Not for use in diagnostic and therapeutic procedures. Not for resale without express authorization.