

## eIF2 alpha Ab

[References\(31\)](#) [Images\(24\)](#)

Cat.#: AF6087	Concn.: ~1mg/ml	Mol.Wt.: 38kDa
Size:	Source: Rabbit	Clonality: Polyclonal

**Application:** WB 1:500-1:2000, IHC 1:50-1:200, IF/ICC 1:100-1:500  
\*The optimal dilutions should be determined by the end user.

**Reactivity:** Human, Mouse, Rat, Pig

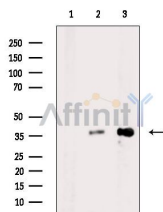
**Storage:** Rabbit IgG in phosphate buffered saline, pH 7.4, 150mM NaCl, 0.02% sodium azide and 50% glycerol. Store at -20 °C. Stable for 12 months from date of receipt.

**Purification:** The antiserum was purified by peptide affinity chromatography using SulfoLink™ Coupling Resin (Thermo Fisher Scientific).

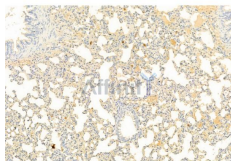
**Immunogen:** A synthesized peptide derived from human eIF2 alpha, corresponding to a region within N-terminal amino acids.

**Uniprot:** P05198

**Description:** eIF2A a translation initiation factor that functions in the early steps of protein synthesis by forming a ternary complex with GTP and initiator tRNA. This complex binds to a 40s ribosomal subunit, followed by mRNA binding to form a 43S preinitiation complex.



Western blot analysis of extracts from various samples, using eIF2 alpha Ab.  
Lane 1: RAW264.7 cells, blocked with antigen-specific peptides,  
Lane 2: RAW264.7 cells,  
Lane 3: PC12.



AF6087 at 1/100 staining Rat lung tissue by IHC-P. The sample was formaldehyde fixed and a heat mediated antigen retrieval step in citrate buffer was performed. The sample was then blocked and incubated with the primary Ab at 4°C overnight. An HRP conjugated anti-Rabbit Ab was used as the secondary Ab.

**IMPORTANT:** For western blot, incubate membrane with diluted primary Ab in 5% w/v milk, 1X TBS, 0.1% Tween@20 at 4°C with gentle shaking, overnight.



**Affinity Biosciences**

website: [www.affbiotech.com](http://www.affbiotech.com)

order: [order@affbiotech.com](mailto:order@affbiotech.com)

---

For Research Use Only. Not for use in diagnostic and therapeutic procedures. Not for resale without express authorization.