

ZNF143 Ab

[Images\(3\)](#)

Cat.#: DF12802
Size:

Concn.: ~1mg/ml
Source: Rabbit

Mol.Wt.: 68 kDa
Clonality: Polyclonal

Application:

WB 1:500-1:2000, IF/ICC 1:100-1:500

*The optimal dilutions should be determined by the end user.

Reactivity:

Human,Mouse,Rat

Storage:

Rabbit IgG in phosphate buffered saline , pH 7.4, 150mM NaCl, 0.02% sodium azide and 50% glycerol. Store at -20 °C. Stable for 12 months from date of receipt.

Purification:

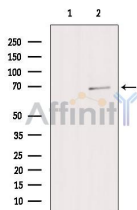
The antiserum was purified by peptide affinity chromatography using SulfoLink™ Coupling Resin (Thermo Fisher Scientific).

Immunogen:

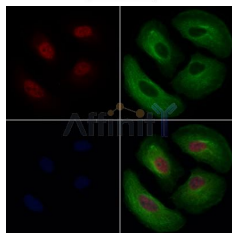
A synthesized peptide derived from human ZNF143, corresponding to a region within N-terminal amino acids.

Uniprot:

P52747



Western blot analysis of extracts from Colo205, using ZNF143 Ab. The lane on the left was treated with blocking peptide.



DF12802 staining HeLa cells by IF/ICC. The samples were fixed with PFA and permeabilized in 0.1% Triton X-100, then blocked in 10% serum for 45 minutes at 25°C. Samples were then incubated with primary Ab(DF12802 1:200) and mouse anti-beta tubulin Ab(T0023 1:200) for 1 hour at 37°C. An AlexaFluor594 conjugated goat anti-rabbit IgG(H+L) Ab(Red) and an AlexaFluor488 conjugated goat anti-mouse IgG(H+L) Ab(Green) were used as the secondary Ab. The nuclear counter stain is DAPI(blue).

IMPORTANT: For western blot, incubate membrane with diluted primary Ab in 5% w/v milk , 1X TBS, 0.1% Tween@20 at 4°C with gentle shaking, overnight.

For Research Use Only. Not for use in diagnostic and therapeutic procedures. Not for resale without express authorization.