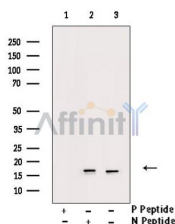


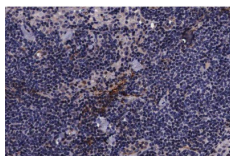
## Phospho-Pin1 (Ser16) Ab

[Images\(2\)](#)

Cat.#: AF3430	Concn.: ~1mg/ml	Mol.Wt.: 18kDa
Size:	Source: Rabbit	Clonality: Polyclonal
Application:	WB 1:500-1:2000, IHC 1:50-1:200, IF/ICC 1:100-1:500 *The optimal dilutions should be determined by the end user.	
Reactivity:	Human, Mouse, Rat, Monkey	
Storage:	Rabbit IgG in phosphate buffered saline, pH 7.4, 150mM NaCl, 0.02% sodium azide and 50% glycerol. Store at -20 °C. Stable for 12 months from date of receipt.	
Purification:	The Ab is from purified rabbit serum by affinity purification via sequential chromatography on phospho-peptide and non-phospho-peptide affinity columns.	
Immunogen:	A synthesized peptide derived from human Pin1 around the phosphorylation site of Ser16.	
Uniprot:	Q13526	
Description:	Pin1 is a member of the parvulin family of peptidyl-prolyl isomerases (PPlase), has been implicated in the G2-M transition of the cell cycle. Has two distinct functional domains: an N-terminal WW domain and a C-terminal PPlase domain.	



Western blot analysis of Phospho-Pin1 (Ser16) Ab expression in Insulin treated COS7 cells lysates. The lane on the right was treated with the antigen-specific peptide.



AF3430 at 1/200 staining human lymph node tissue sections by IHC-P. The tissue was formaldehyde fixed and a heat mediated antigen retrieval step in citrate buffer was performed. The tissue was then blocked and incubated with the Ab for 1.5 hours at 22°C. An HRP conjugated goat anti-rabbit Ab was used as the secondary Ab.

**IMPORTANT:** For western blot, incubate membrane with diluted primary Ab in 5% w/v milk, 1X TBS, 0.1% Tween@20 at 4°C with gentle shaking,

---

overnight.

---

For Research Use Only. Not for use in diagnostic and therapeutic procedures. Not for resale without express authorization.