

## ENOPH1 Ab

[Images\(2\)](#)

|                |                 |                       |
|----------------|-----------------|-----------------------|
| Cat.#: DF12977 | Concn.: ~1mg/ml | Mol.Wt.: 29 kDa       |
| Size:          | Source: Rabbit  | Clonality: Polyclonal |

**Application:** WB 1:500-1:2000  
\*The optimal dilutions should be determined by the end user.

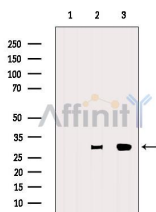
**Reactivity:** Human,Mouse,Rat,Monkey

**Storage:** Rabbit IgG in phosphate buffered saline , pH 7.4, 150mM NaCl, 0.02% sodium azide and 50% glycerol. Store at -20 °C. Stable for 12 months from date of receipt.

**Purification:** The antiserum was purified by peptide affinity chromatography using SulfoLink™ Coupling Resin (Thermo Fisher Scientific).

**Immunogen:** A synthesized peptide derived from human ENOPH1, corresponding to a region within C-terminal amino acids.

**Uniprot:** Q9UHY7



Western blot analysis of extracts from various samples, using ENOPH1 Ab.  
Lane 1: Rat liver, treated with blocking peptide;  
Lane 2: Rat liver;  
Lane 3: VERO.

**IMPORTANT:** For western blot, incubate membrane with diluted primary Ab in 5% w/v milk , 1X TBS, 0.1% Tween@20 at 4°C with gentle shaking, overnight.

For Research Use Only. Not for use in diagnostic and therapeutic procedures. Not for resale without express authorization.