

## Phospho-Syntaxin 1A (Ser14) Ab

[Images\(3\)](#)

Cat.#: AF3463	Concn.: ~1mg/ml	Mol.Wt.: 35kDa
Size:	Source: Rabbit	Clonality: Polyclonal

Application: WB 1:500-1:2000, IF/ICC 1:100-1:500

\*The optimal dilutions should be determined by the end user.

Reactivity: Human, Mouse, Rat

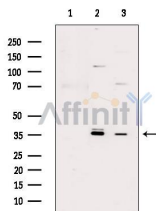
Storage: Rabbit IgG in phosphate buffered saline, pH 7.4, 150mM NaCl, 0.02% sodium azide and 50% glycerol. Store at -20 °C. Stable for 12 months from date of receipt.

Purification: The Ab is from purified rabbit serum by affinity purification via sequential chromatography on phospho-peptide and non-phospho-peptide affinity columns.

Immunogen: A synthesized peptide derived from human Syntaxin 1A around the phosphorylation site of Ser14.

Uniprot: Q16623

Description: STX1A is a type IV membrane protein involved in docking of synaptic vesicles at presynaptic active zones. May play a critical role in neurotransmitter exocytosis. Part of the SNARE core complex containing SNAP25, VAMP2 and STX1A. Three splice variant isoforms have been described.

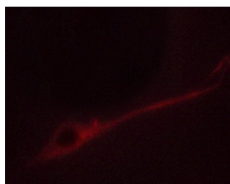


Western blot analysis of extracts from various samples, using Phospho-Syntaxin 1A (Ser14) Ab.

Lane 1: Heat-shock treated MDA-MB-231 cells, blocked with antigen-specific peptides,

Lane 2: Heat-shock treated MDA-MB-231 cells,

Lane 3: Heat-shock treated A2780 cells.



AF3463 staining NIH/3T3 cells by ICC/IF. Cells were fixed with PFA and permeabilized in 0.1% saponin prior to blocking in 10% serum for 45 minutes at 37°C. The primary Ab was diluted 1/400 and incubated with the sample for 1 hour at 37°C. A Alexa Fluor 594 conjugated goat polyclonal to rabbit IgG (H+L), diluted 1/600 was used as secondary Ab.

**IMPORTANT:** For western blot, incubate membrane with diluted primary Ab

---

in 5% w/v milk , 1X TBS, 0.1% Tween@20 at 4°C with gentle shaking,  
overnight.

---

For Research Use Only. Not for use in diagnostic and therapeutic  
procedures. Not for resale without express authorization.