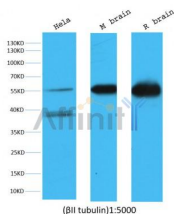


Beta II tubulin Ab

[Images\(1\)](#)

Cat.#: BF0716	Concn.: ~1mg/ml	Mol.Wt.: 55kDa
Size:	Source: Mouse	Clonality: Monoclonal

Application:	WB(1:1000-1:10000), IP(1:200) *The optimal dilutions should be determined by the end user.
Reactivity:	Human,Mouse,Rat
Storage:	Mouse IgG1 in phosphate buffered saline (without Mg ²⁺ and Ca ²⁺), pH 7.4, 150mM NaCl, 0.02% sodium azide and 50% glycerol. Store at -20 °C. Stable for 12 months from date of receipt.
Purification:	Affinity-chromatography.
Immunogen:	Purified recombinant fragment of human Beta II tubulin expressed in E. Coli.
Uniprot:	Q13885



Western blot analysis of extracts from various samples, using Beta II tubulin mouse monoclonal Ab.

lane1:Hela,
lane2:mouse brain,
lane3:rat brain

IMPORTANT: For western blot, incubate membrane with diluted primary Ab in 5% w/v milk , 1X TBS, 0.1% Tween@20 at 4°C with gentle shaking, overnight.

For Research Use Only. Not for use in diagnostic and therapeutic procedures. Not for resale without express authorization.