

Cyclophilin B Ab

[Images\(1\)](#)

Cat.#: BF0717	Concn.: ~1mg/ml	Mol.Wt.: 24kDa
Size:	Source: Mouse	Clonality: Monoclonal

Application: WB(1:1000-1:10000), IHC(1:100-1:1000)
*The optimal dilutions should be determined by the end user.

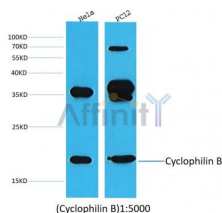
Reactivity: Human,Mouse,Rat

Storage: Mouse IgG1 in phosphate buffered saline (without Mg²⁺ and Ca²⁺), pH 7.4, 150mM NaCl, 0.02% sodium azide and 50% glycerol. Store at -20 °C. Stable for 12 months from date of receipt.

Purification: Affinity-chromatography.

Immunogen: Purified recombinant fragment of human Cyclophilin B expressed in E. Coli.

Uniprot: P23284



Western blot analysis of extracts from various samples,using Cyclophilin B mouse monoclonal Ab.
lane1:Hela,
lane2:PC12

IMPORTANT: For western blot, incubate membrane with diluted primary Ab in 5% w/v milk , 1X TBS, 0.1% Tween@20 at 4°C with gentle shaking, overnight.

For Research Use Only. Not for use in diagnostic and therapeutic procedures. Not for resale without express authorization.