

## Rubisco Ab

[Images\(1\)](#)

Cat.#: BF0726	Concn.: ~1mg/ml	Mol.Wt.: 53kDa
Size:	Source: Mouse	Clonality: Monoclonal

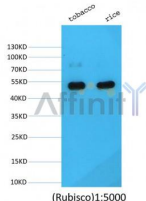
Application: WB 1:1000-1:10000  
\*The optimal dilutions should be determined by the end user.

Reactivity: Plants

Storage: Mouse IgG1 in phosphate buffered saline (without Mg<sup>2+</sup> and Ca<sup>2+</sup>), pH 7.4, 150mM NaCl, 0.02% sodium azide and 50% glycerol. Store at -20 °C. Stable for 12 months from date of receipt.

Purification: Affinity-chromatography.

Uniprot: P00875



Western blot analysis of extracts from various tissue ,using Rubisco mouse monoclonal Ab.  
lane1:tobacco,  
lane2:rice

**IMPORTANT:** For western blot, incubate membrane with diluted primary Ab in 5% w/v milk , 1X TBS, 0.1% Tween@20 at 4°C with gentle shaking, overnight.

For Research Use Only. Not for use in diagnostic and therapeutic procedures. Not for resale without express authorization.