

## Phospho-CPI17alpha (Thr38) Ab

[References\(1\)](#) [Images\(3\)](#)

Cat.#: AF3473	Concn.: ~1mg/ml	Mol.Wt.: 22kDa
Size:	Source: Rabbit	Clonality: Polyclonal

Application: WB 1:500-1:2000, IHC 1:50-1:200, IF/ICC 1:100-1:500  
\*The optimal dilutions should be determined by the end user.

Reactivity: Human,Mouse,Rat

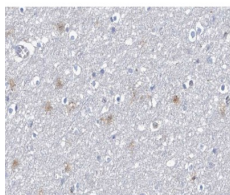
Storage: Rabbit IgG in phosphate buffered saline , pH 7.4, 150mM NaCl, 0.02% sodium azide and 50% glycerol. Store at -20 °C. Stable for 12 months from date of receipt.

Purification: The Ab is from purified rabbit serum by affinity purification via sequential chromatography on phospho-peptide and non-phospho-peptide affinity columns.

Immunogen: A synthesized peptide derived from human CPI17alpha around the phosphorylation site of Thr38.

Uniprot: Q96A00

Description: PPP1R14A a phosphorylation-dependent inhibitory subunit of protein phosphatase 1 (PP-1A). Phosphorylation by PKC regulates its binding to PP-1A. Acts co-operatively to inhibit myosin light chain phosphatase (MLCP) activity.



AF3473 at 1/100 staining human Brain tissue sections by IHC-P. The tissue was formaldehyde fixed and a heat mediated antigen retrieval step in citrate buffer was performed. The tissue was then blocked and incubated with the Ab for 1.5 hours at 22°C. An HRP conjugated goat anti-rabbit Ab was used as the secondary Ab.

**IMPORTANT:** For western blot, incubate membrane with diluted primary Ab in 5% w/v milk , 1X TBS, 0.1% Tween@20 at 4°C with gentle shaking, overnight.

For Research Use Only. Not for use in diagnostic and therapeutic procedures. Not for resale without express authorization.