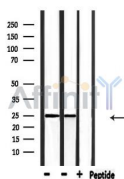


RIT1 Ab

[Images\(1\)](#)

Cat.#: AF0250	Concn.: ~1mg/ml	Mol.Wt.: 25kDa
Size:	Source: Rabbit	Clonality: Polyclonal
Application:	WB 1:500-1:3000, IF/ICC 1:100-1:500 *The optimal dilutions should be determined by the end user.	
Reactivity:	Human,Mouse,Rat	
Storage:	Rabbit IgG in phosphate buffered saline , pH 7.4, 150mM NaCl, 0.02% sodium azide and 50% glycerol. Store at -20 °C. Stable for 12 months from date of receipt.	
Purification:	The antiserum was purified by peptide affinity chromatography using SulfoLink™ Coupling Resin (Thermo Fisher Scientific).	
Immunogen:	A synthesized peptide derived from human RIT1, corresponding to a region within C-terminal amino acids.	
Uniprot:	Q92963	
Description:	RIT1 Plays a crucial role in coupling NGF stimulation to the activation of both EPHB2 and MAPK14 signaling pathways and in NGF- dependent neuronal differentiation. Belongs to the small GTPase superfamily. Ras family. Interacts with MLLT4, the C-terminal domain of RALGDS and RLF, but not with RIN1 and PIK3CA. RLF binds exclusively to the active GTP-bound form.	



Western blot analysis of extracts from mouse lung, rat brain, using RIT1 Ab.

IMPORTANT: For western blot, incubate membrane with diluted primary Ab in 5% w/v milk , 1X TBS, 0.1% Tween@20 at 4°C with gentle shaking, overnight.

For Research Use Only. Not for use in diagnostic and therapeutic procedures. Not for resale without express authorization.