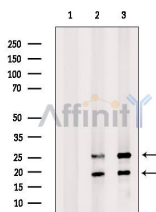


## Somatostatin Ab

[References\(1\)](#) [Images\(2\)](#)

Cat.#: DF13243	Concn.: ~1mg/ml	Mol.Wt.: 12kDa, 18kDa, 25 kDa
Size:	Source: Rabbit	Clonality: Polyclonal
Application:	WB 1:500-1:2000 *The optimal dilutions should be determined by the end user.	
Reactivity:	Human, Mouse, Rat	
Storage:	Rabbit IgG in phosphate buffered saline, pH 7.4, 150mM NaCl, 0.02% sodium azide and 50% glycerol. Store at -20 °C. Stable for 12 months from date of receipt.	
Purification:	The antiserum was purified by peptide affinity chromatography using SulfoLink™ Coupling Resin (Thermo Fisher Scientific).	
Immunogen:	A synthesized peptide derived from human Somatostatin, corresponding to a region within the internal amino acids.	
Uniprot:	P61278	



Western blot analysis of extracts from various samples, using Somatostatin Ab.

Lane 1: Myeloma cells, treated with blocking peptide;

Lane 2: Myeloma cells;

Lane 3: EC304 cells.

Observed bands: 18, 25 kDa.

**IMPORTANT:** For western blot, incubate membrane with diluted primary Ab in 5% w/v milk, 1X TBS, 0.1% Tween@20 at 4°C with gentle shaking, overnight.

For Research Use Only. Not for use in diagnostic and therapeutic procedures. Not for resale without express authorization.