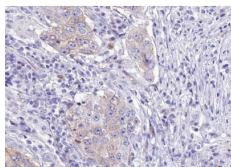


Phospho-WNK1 (Thr60) Ab

[References\(1\)](#) [Images\(3\)](#)

Cat.#: AF3483	Concn.: ~1mg/ml	Mol.Wt.: 230kDa
Size:	Source: Rabbit	Clonality: Polyclonal
Application:	WB 1:500-1:2000, IHC 1:50-1:200, IF/ICC 1:100-1:500 *The optimal dilutions should be determined by the end user.	
Reactivity:	Human,Mouse,Rat	
Storage:	Rabbit IgG in phosphate buffered saline , pH 7.4, 150mM NaCl, 0.02% sodium azide and 50% glycerol. Store at -20 °C. Stable for 12 months from date of receipt.	
Purification:	The Ab is from purified rabbit serum by affinity purification via sequential chromatography on phospho-peptide and non-phospho-peptide affinity columns.	
Immunogen:	A synthesized peptide derived from human WNK1 around the phosphorylation site of Thr60.	
Uniprot:	Q9H4A3	
Description:	WNK1 a serine-threonine protein kinase that controls sodium and chloride ion transport. May regulate the activity of the thiazide-sensitive Na-Cl cotransporter SLC12A3 by phosphorylation. May also play a role in actin cytoskeletal reorganization.	



AF3483 at 1/100 staining human Lung carcinoma tissue sections by IHC-P. The tissue was formaldehyde fixed and a heat mediated antigen retrieval step in citrate buffer was performed. The tissue was then blocked and incubated with the Ab for 1.5 hours at 22°C. An HRP conjugated goat anti-rabbit Ab was used as the secondary Ab.

IMPORTANT: For western blot, incubate membrane with diluted primary Ab in 5% w/v milk , 1X TBS, 0.1% Tween@20 at 4°C with gentle shaking, overnight.

For Research Use Only. Not for use in diagnostic and therapeutic procedures. Not for resale without express authorization.